



ACCEPT ONLY THE BEST



SKID UNITS

**A UNIVERSE
OF ENGINEERING FOR THE BRAVEST**

Toll Free: 1-800-567-2719

www.fire-pump.com

*CET is a trademark of CET Fire Pumps Mfg, Ltd.

HIGH PERFORMANCE AND EASY TO USE...



ACCEPT ONLY THE BEST

CET Fire Pumps MFG has been involved in the manufacture of firefighting equipment for more than 100 years. Our experience, combined with the expertise of our entire staff, allow us to offer you the simplest, highest performing, most reliable skid units in the industry. Completely engineered and tested. CET skid units perform in all the environments you expect them to.

www.fire-pump.com

A CENTURY OF ENGINEERING FOR THE BRAVEST



OPERATING A CET SKID UNIT IS EASY

We are proud to offer you the most functional skid units available. Because we know how important ease of operation is to you. Each detail of your skid unit is engineered and manufactured to help you react quickly. Features such as, control panels, start/stop locations, manifold construction and water/foam options are designed to operate with a minimum of effort...day or night!

Our skid units are ready to use when you need them, and it's as simple as 1, 2, 3!

PUSHING THE LIMITS OF HIGH PERFORMANCE: THAT'S OUR CHALLENGE!

At CET Fire Pumps MFG, our goal is to impress you. Three "D" dynamic image engineering systems, complete manufacturing control, in house major component manufacturing, all to give you, one source design history and one stop service response. If we get it wrong...we will make it right!

Our skid units are ready to react with you, because our standards are high enough to meet yours... and even higher!

NOTHING LESS THAN THE HIGHEST QUALITY COMPONENTS GO INTO MAKING A CET SKID UNIT.

We make no compromise on the parts we use to manufacture your firefighting skid unit. Additionally, each skid unit is carefully inspected and tested before it is delivered to you. For our standards to be the best, we must work every day, to meet yours.

The reliability of our equipment is not just a standard, it's our commitment!



BECAUSE IT IS WORTH IT!



MOST COMMON FEATURES ON OUR SKID UNITS



Fill-in connection with flexible hose



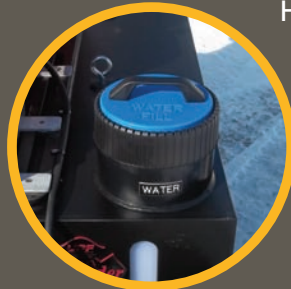
3 gallon gas tank with aluminum holder and quick connector



Hose reel



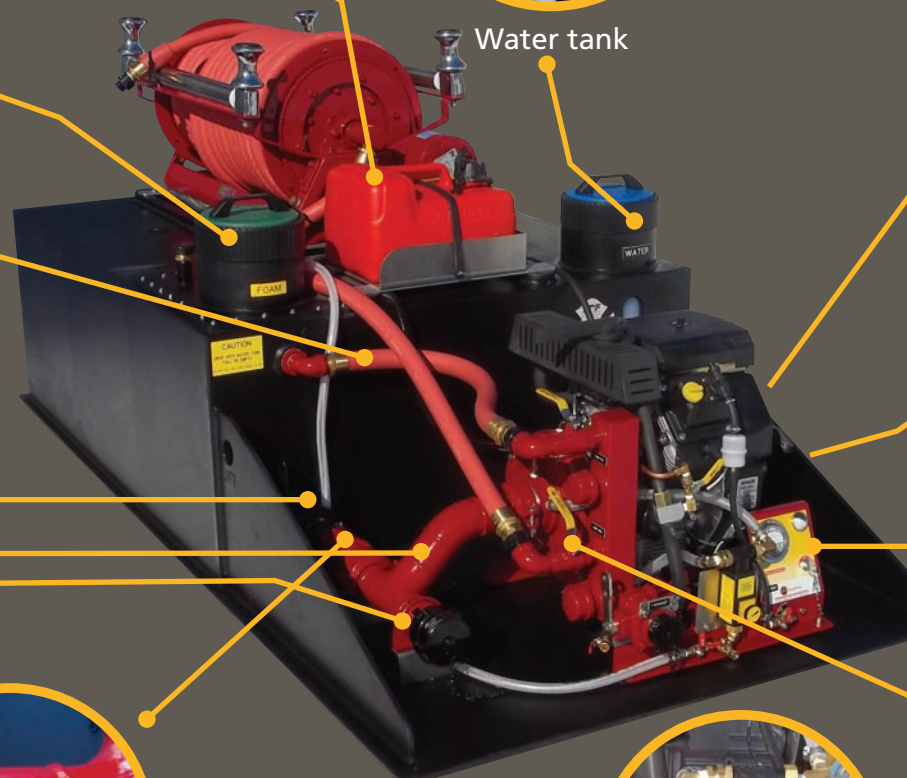
Foam tank



Water tank



2 1/2" tank suction ball valve



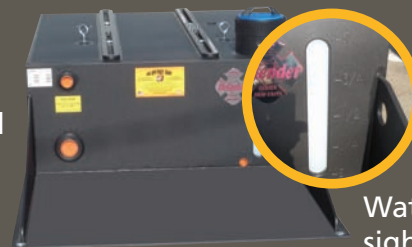
High density steel suction piping



High quality welds and exceeds international standards



Suction cap with chain



Polypropylene water tanks



Scotty foam system

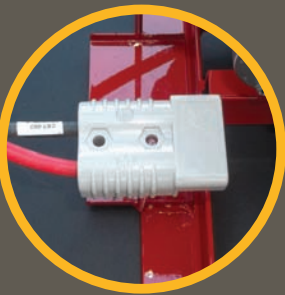
Water sight gauge



Plug for water tank drain



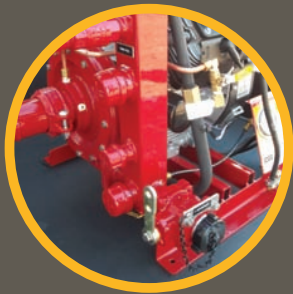
3" overflow (at the back)



12 volt quick connector



Control panel with master switch, light and pressure gauge



Main manifold made from high density tubing

Shipping always included in the final price



All our Skid Units are shipped in wooden boxes to prevent damage during handling

CUSTOMIZE YOUR SKID UNIT IN 7 EASY STEPS

REQUESTING A QUOTE HAS NEVER BEEN EASIER!

WWW.FIRE-PUMP.COM



QUICK DELIVERY SKID UNITS MODELS

▼ Econo Pac



SPECIFICATIONS:

- Low mount configuration
- PFP-6hpHND-M-Twin fire pump
- Pump capacity 20 gpm at 125 psi
- Self priming fire pump
- Pump control panel
- 60 gallon water tank
- Manual rewind hose reel
- 100' x 5/8" booster hose
- Forestry nozzle
- 1.5" inlet with cap and chain
- 1.5" outlet with cap and chain
- 1" valve for hose reel
- 1" valve for tank fill / recirculating
- 3/4" polypropylene platform with under lifting area

▼ Forest Pac

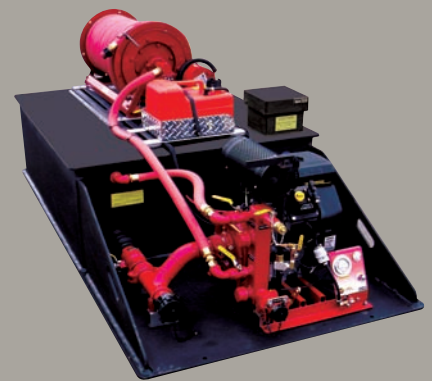


SPECIFICATIONS:

- 200 fully baffled propylene water tank
- 6.5hp twin impeller fire pump
- 60gpm at 10psi, 40gpm at 100psi and 20gpm at 125psi
- 1.5 gallons integrated fuel tank
- Lighted control panel
- Low profile electric rewind hose reel
- 1 inch x 100 foot booster hose
- 2.5 inch tank to pump 1/4 turn ball valve
- Multiple outlets manifold
- 1.5 inch service line with cap and chain

Options available

▼ Attack Pac



SPECIFICATIONS:

- 200 fully baffled propylene water tank
- 20hp mid range fire pump
- 265gpm at 50psi, 190gpm at 100psi, 115gpm at 150psi and 45gpm at 200psi
- 3 gallon fuel tank
- Lighted control panel
- Low profile electric rewind hose reel
- 1 inch x 100 foot booster hose
- 2.5 inch tank to pump 1/4 turn ball valve
- Steel manifold with multiple outlets
- 1.5 inch service line with cap and chain
- 3/4 inch pressurized garden hose connection

Options available

▼ Ready Pac



SPECIFICATIONS:

- 200 fully baffled propylene water tank
- 6.5hp twin impeller fire pump
- 60gpm at 10psi, 40gpm at 100psi and 20gpm at 125psi
- 1.5 gallons integrated fuel tank
- Lighted control panel
- Pre-connect hose tray with connection
- 2.5 inch tank to pump 1/4 turn ball valve
- Multiple outlets manifold
- 1.5 inch service line with cap and chain

Options available

▼ Skeeter Space Pac



SPECIFICATIONS:

- 75 fully baffled propylene water tank
- 6.5hp twin impeller fire pump
- 60gpm at 10psi, 40gpm at 100psi and 20gpm at 125psi
- 1.5 gallons integrated fuel tank
- Lighted control panel
- 1.5 inch tank to pump 1/4 turn ball valve
- Multiple outlets manifold
- 1.5 inch and 1 inch service lines with cap and chain
- Stoke(s) basket area
- Open storage compartment
- Enclosed storage compartment

Options available

▼ Ultra Power Pac



SPECIFICATIONS:

- Modular configuration
- CET Piston Type High Pressure Pump
- 11 GPM
- 1450 P.S.I.
- 16hp Briggs and Stratton Engine with integrated Gas Tank
- Self-Priming
- 1.5 Gallon Fuel Tank
- Triple Use Discharge Gun. Fog, Jet, Atomized
- Manual Hose reel with 150' High Pressure Hose
- 1" Inlet
- Custom Pump Panel
- High Strength Epoxy treated frame
- Automatic acceleration motor pump system
- Auxiliary outlet in the control panel to connect a second line

Options available

SATISFIED CUSTOMERS AROUND THE WORLD

C.E.T. products are shipped every day to all parts of America as well as overseas. Here are some of the towns where you can find a customer who is satisfied with his C.E.T. products.

BARTLETT, KS - SINGAPORE, AMES, NY - HALE, MI - OCEANSIDE, CA - CHANNAHON, IL - AUBURN, ME - MARTINSVILLE, IN - LINEVIA, IL - MIDDLE FALLS, NY - LINDSAY, CA - LINCOLN CITY, OR - JENKS, OK - TSUEN WAN, - OLATHE, KS - WATERBURY, VT - ERLANGER, KY - APPLE CREEK, OH - WILFORD, NOTTINGHAM - **NASA, Cap Canaveral, FL** - CLAREMONT, NH - ISLAND FALLS, ME - RUSHVILLE, IN - COEYMAN'S HOLLOW, NY - TILLEDA, WI - ULSTER PARK, NY - NAZARETH, PA - E. NORWALK, CT - WACO, TX - OAKWOOD, TX - CROCKER, MO - MOUNTAIN CITY, TN - DECATUR, AL - CONESVILLE, IA - TAIPEI, TSIWAN - ST-BONNET DE MURE - FARMERS, KY - WILSON, MI - NAVASOTA, TX - WILLIAMSTOWN, VT - LAKE GENEVA, WI - CRANBURY LAKE, NY - SHARON, VT - WASHINGTON, IL - SOUTH 4TH STREET, OH - EAST AURORA, NY - DAYTONA BEACH, FL - **Department of Agriculture, Goldsby, OK** - SWAN ISLAND, ME - SANDY HOOK, KY - WALKERVILLE, MI - DEFUNIACK SPRINGS, FL - ARSHDALE, NC - ORWIGSBURG, PA - STONE RIDGE, NY - CARROLL, IA - BRANCHPORT, NY - KINGFIELD, ME - BATH, NH - BERGUES, FR - WATERBURY CENTER, VT - **DFAS-CO Defense Supply Center** - CHARLEMONT, MA - BURLINGTON, MA - ELEONOR, WV - FORT ANN, NY - GROVE, OK - HUBBERSTON, MI - BRESCIA, ITALY - CROSS LANES, WV - CHURCHVILLE, NY - HOLDEN, LA - JOLIET, IL - HUGHES, AR - TAOISKI VALLEY, NM - OCEANSIDE, CA - MOULTON BOROUGH, NH - PUTNAM STATION, NY - BOHEMIA, NY - TOHOMA, CA - CHARLOTTE, NC - HOLBROOK, NY - ANDERSON, SC - HOMER, AK - WATERFORD, PA - LESTER, PA - LATROBE, PA - NEWBURGH, NY - MEMPHIS, TN - EUTAW AL - BATHEL, VT - EAST BARNARD, VT - **Logan International Boston Airport** - BLANDON, PA - STONE RIDGE, NY - JASONVILLE, IN - NOTTINGHAM, ENGLAND - ST-LAURENCE, QC - REPUBLIC OF MALDIVES - MANCHESTER, WA - HERNDON, KY - MORLEY, MI - AUCKLAND, NEW ZEALAND - MANNINGTON, WV - PAYNE SPRINGS, TX - CHATTANOOGA, TN - WEST WAREHAM, MA - WINTHROP, ME - MT. WOLF, PA - CROSS JUNCTION, VA - LANDISVILLE, NJ - CLAREMORE, OK - OSHKOSH, WI - ST-JOHN, IN - PANAMA - WALBRIDGE, OH - EDGEWOOD, KY - ISTMBU, TURQUIE - WEST MORELAND, NH - COLUMBUS, OH - WADLEY, AL - VIOLA, AR - MCCOMB, OH - PALM BAY, FL - HOQIAM, WA - **United State Navy Base** - HAZARD, KY - STRAFFORD, MO - GHENT WV - ALBANY, NY - TRUCKEE, CA - A-401 LINZ, - WESTPORT, NY - LOS ANGELES, CA - OLYMPIC VALLEY, CA - STE-GENEVIÈVE, MO - CAMPBELLSVILLE, KY - JAMAICA, NY - WYALUSING, PA - ACME, MA - NOBLETON, FL - NANTUCKET, MA - HARPURSVILLE, NY - INDIANAPOLIS, IN - PERRYTON, TX - DOTY, WA - MORLEY, MI - ERIN, NY - KNOX, IN - FARLEY, IA - S'PICEWOOD, TX - RUSHVILLE, IN - DOW CITY, IA - FORT LAUDER, FL - PETERSBURG, MI - DOWNERS GROVE, IL - EAST ANDOVER, NH - TRINIDAD AND TOBAGO WEST INDIE - GRANDVIEW, TX

State of Hawaii - GASBURG, VA - ARNOLD, MO - TOMAHAWK, WI - SENECA FALLS, NY - BEIJING, P.R. - RICHMOND HILL, NY - BEDFORD, NY - ELMIRA, NY - PANAMA, REP PANAMA - LAWRENCE, KS - HOWE, IN - NEWTON, NJ - TOWER, MN - PORTLAND, MI - WENTZVILLE, MO - CHILDS, PA - BELMONT, NH - KEYSTONE HEIGHTS, FL - SMITHFIELD, RI - LYNCHBURG, VA - OCALA, FL - MIDDLETOWN, VA - NEW LISBON, IN - MIAMI, FL - ABU DHABI, U.A.E. - CLINTON, NJ - SHREVEPORT, LA - SLIGO, PA - HOOKS, TX - JACKSBORO, TN - JIANGUOMEN BEIJING, CHINA - ST-JOHN, IN - HOLMAN, NM - GOTHENBURG, NE - SPOKANE, WA - GAINESVILLE, VA - ROXANA, IL - CONDELL PARK NSW, AUSTRALIA - 894 SAN ANTONIO, LIMA - EAST ALTON, IL - MENDON, MA - POPLAR BLUFF, MO - BERLIN, MD - CLIFTON PARK, NY - BARLOW, KY - PEMBINE, WI - JAMESTOWN, NY - DEXTER, MI - KANSAS CITY, KS - **New York State Department of Corrections, Albany, NY** - BELLFLOWER, MO - MARTINSVILLE, IL - FROSTBURG, MD - VOLGA, SD - VINTON, VA - BENTON, KY - SCARBOROUGH, ME - MISSOULA, MT - LESSVILLE, LA - WISE RIVER, MT - RONAN, MT - ELMER, LA - COLOCCAN CITY, PHILIPPINES - ANAHEIM, CA - SAFAT, KUWAIT - CAVE CITY, KY - GROVE, OK - SPOKANE, WA - WICKLIFFE, KY - MELROSE, NY - FREDERICKTOWN, OH - BIG HORN, WY - KENOVA, WV - MOORHEAD, MN - SOUTH BOSTON, VA - GRANDVIEW, MO - VIAN, OK - PETAL, MS - YORK, NE - LEBANON, PA - SPARTANBURG, SC - LEBANON, PA - WEST CHICAGO, IL - PORTLAND, IN - HUMBLE, TX - **US Army, White Sand Missile Range, NM** - PERU, NY - REHOBOTH BEACH, DE - CLIFTON PARK, NY - ALEXANDRIA, MN - WEST MINISTER, CA - LEBANON, PA - AMITYVILLE, NY - JAMES CITY, PA - SALEM, UTAH - GRANVILLE, WV - MT. UPTON, NY - HADLEY, MA - YAPHANK, NY - MANNFORD, OK - NEW WILMINGTON, PA - HANOVER, PA - CASTLE VALLEY, UT - UNION CITY, MI - SHARPSBURG, NC - CARBONDALE, IL - HENDERSON, TX - **Florida Department of Environment Protection** - HAVERHILL, MA - HOWE, IN - PARISH ROAD, WATER-TOWN, NY - MCLEAN, NY - MESA, AZ - SHORTSVILLE, NY - LANCASTER, MA - BLUE SPRING, MS - BABBITH, MN - WESTFIELD, NY - SEMINARY, MS - STILLWALE, OK - FLANDERS, NY - HEATH, OH - BLOOMFIELD, NY - LIMA - ANNA, OH - WHITE PLAINS, NY - PAYSAN, AZ - BRENHAM, TX - GRAND MARAIS, MN - MILROY, PA - SCALY MOUNTAIN, NC - MOBILE, AL - MINERAL RIDGE, OH - SUMMERVILLE, SC - DRY BRANCH, GA - ARLINGTON, TX - ST ALBANS, VT - ISSAQUAH, WA - MINOT, ND - RIVERSIDE, MI - ORLAND, IN - OCALA, FL - DEWART, PA - LYONS, SD - LEXING-TON, KY - ST. THOMAS, VIRGIN ISLANDS, VI - AUBURN, IN - WEST OSSISPEE, NH - LAKE PARK, FL - **South Dakota Department of Agriculture, Springfield, SD** - KOUNTZE, TX - DEFUNIACK SPRINGS, FL - FISHER, PA - SOUTH HOUS-TON, TX - SAN SALVADOR, EL SALVADOR - CATO, NY - GRAND MARAIS, MN - KARACHI, PK - SPRINGFIELD, SD - UNIONVILLE, IN - ALBUQUERQUE, NM - DECATUR, AL - HIGH SPRINGS, FL - ROCKY MOUNT, NC - MACON, GA - MIAMI, FL - FRANKLIN, NC - MULLINS, SC - HONOLULU, HI - GEORGETOWN, GUYANA - HERSHEY, PA - WILDWOOD, NJ - LEWISTOWN, MT - HEPHIZBAH, GA - ROCHESTER HILLS, MI - HAGERSTOWN, MD - VALDOSTA, GA - TUSCALOOSA, AL - FARGO, ND - WILLIAMSPORT, MD - BEAVER, PA - SAN FRANCISCO, CA - PRICHARD, WV - RAYNE, LA - ELMIRA, NY - ELK POINT, SD - SOUTHWEST RANCHES, FL - ST-ALBAN-LEYSSE, CEDEX, FR - TUPELO, MS - HELENA, MT - THOMPSON, IL - AMLIN, OH - PACIFIC, MO - EAST GLASTONBURY, CT - KLONGTON, KLONGTOE, BANGKOK THA - CAMP CROOK, SD - SOUTH BARRE, VT - PRINCETON, IL - **Goergia Forestry Commission** - DUBOIS, PA - BARBERTON, OH - VIRGINIA, IL - ROCK HILL, SC - ALEXANDRIA, MN - HOLLAND, MI - PILOT KNOB, NY - ROCHESTER, NY - LEBANON, PA - NO. ATTLEBORO, MA - WILLIAMSPORT, MD - DETROIT, MI - TOLEDO, OH - PROSPECT, OH - ALBANY, NY - ABBOTTSTOWN, PA - DEN-VER, CO - MILROY, PA - RANDOLPH, ME - HAM LAKE, MN - CEDAR KEY, FL - EAST JORDAN, MI - YORK, PA - MEMPHIS, TN - SCHENECTADY, NY - LYTELTON, CENTURION - MILWAUKEE, WI - GRAYLING, MI - DAMASCUS, AR - PALMER, AK - POMEROY, PA - JEFFERSONVILLE, NY - MAY-FIELD, NY - OCALA, FL - WALKER, LA - CHATTANOOGA, TN - ABU DHABI, U.A.E. - HAGERSTOWN, MD - WOLCOTTVILLE, IN - ATLANTIC BEACH, FL - IMPERIAL, TX - DRIPPING SPRINGS, TX - **Maryland Department of Natural Resources** - NEW CASTLE, PA - GROTON, VT - ONA, WV - GRAND FORKS, ND - SYRACUSE, NY - WYOMING, MN - BRICK, NY - HILL CITY, KS - MONTICELLO, MN - FREELAND, MI - GREENSBORO, FL - WATERTOWN, CT - BUENOS AIRES - ODEN, AR - YAPHANK, NY - COLUMBIA CITY, IN - ELMSFORD, NY - OMAHA, NE - DAKOTA, IL - LOUISTOWN, PA - CORNISH FLAT, NH - GOLDSBY, OK - TYNDALL AFB, FL - AVALON, TX - EDWARDSVILLE, PA - BARTOW, FL - MORTON, IL - ALEXIS, IL - SAUDI ARABIA - AMAROUSSION ATHENS - ALLEN, KY - CAMPBELL, NY - PINE BROOK, NJ - ANDOVER, KS - JEFFERSON, NC - CLEAR LAKE, WI - **Wisconsin Department of Natural Resources** - LITTLE EGG HARBOR, NJ - KEESVILLE, NY - TAYLOR, MI - WEST PALM BEACH, FL - NEWHALL, CA - ELDRÉD, PA - BARTOW, FL - CORRALES, NM - PITTSBURGH, PA - OVERLAND PARK, KS - POWELLPON, WV - CORBIN, KY - DENTON, MD - N. SMITHFIELD, RI - ST VINCENT AND THE GRENADINES - ATLANTA, GA - QUITO, ECUADOR - HAGERSTOWN, MD - OTTAWA, ONT - MIS-SOULA, MT - RAPID CITY, SD - SNYDER, NE - ZIONSVILLE, IN - NORTH ANDOVER, MA - FAIRVIEW, NC - ARCADIA, SC - FREEBURG, IL - WHITE SANDS MISSILE RANGE, NM - SULLIVAN'S ISLAND, SC - WHANGAPARAADA, AUCKLAND N.Z. - DUBAI - CASTLEFORD, ID - DEWITT, IA - GREERS FERRY, AR - TUCSON, AZ - MALTA, NY - GREENUP, KY - MIDDLETON, WI - TIPTON, IN - RIO DE JANEIRO, BR - JARRETTSVILLE, MD - CAMBRIDGE, MD - MARIETTA, GA - WEST LIBERTY, IA - ORION, IL - CA - TOLEDO, OHIO - CHICKASHA, OK - BYHALIA, MS - DENTON, TX - FORSYTH, MT - SAN DIEGO, CA - BELLINGHAM, WA - HEBCON, MD - RAWLINS, WY - SANDY, OR - MARION, WI - STRATFORD, CT - SOUTHSIDE, AL - JULIAN, WV - W.OSSISPEE, NH - LOCKPORT, NY - EAST NOR-WICH, NY - LITCHFIELD, IL - FENGTAI DISTRICT, BEIJING - LEXINGTON, KY - HARTS, WV - WELCH, WV - FREMONT, IN - DANVILLE, VT - DICKINSON, ND - HOOSICK FALLS, NY - SARATOGA SPRINGS, NY - KARACHI, PK - REEDSVILLE, WI - WALLER, TX - HAWLEY, PA - NIAGARA FALLS, NY - BEGGS, OK - VERONA, WI - RUWI - HEMPHILL, TX - ORLANDO, FL - GRAHAM, WA - WALLINGFORD, CT - LAUREL, MS - ALLEGHENY COUNTY AIRPORT, PITTSBURGH, PA - ANCHORAGE, AK - LORETTO, TN - GLASTONBURY, CT - CAMDEN, OH - FAIRFIELD, IA - SIOUX FALLS, SD - TOLLAND, CT - CORMWELL, CT - EAST JORDAN, MI - FRANKSTON, TX - CAMBRIDGE, MA - GREENEVILLE, TN - ORIENT, NY - SALKUM, WA - CABOT, AR - BUSHNELL, FL - **US Department of the Interior, Ft. Thompson, SD** - BERLIN, OH - YAMPA, CO - BEECHER FALLS, VT - SCOTTSBURG, IN - CAIRO - MONTEREY, IN - LATHAM, NY - WILWOOD, NJ - OCEANA, WV - ENOSBURGH, VT - EUREKA, UT - FREDERICKTOWN, OH - SALINA, OK - FRIENDSHIP, MD - LUYVERNE, MN - WINCHESTER, KY - STAUNTON, VA - COVINGTON, VA - MILESBURG, PA - GREER, SC - PAULDING, MS - BELLE VERNON, PA - GEORGETOWN, CA - GALLATIN, TN - NASHUA, NH - LYNDHURST, VA - SEARCY, AR - WEST BARNSTABLE, MA - LAKE BLUFF, IL - CROSS CITY, FL - BRANDON, SD - FONDA, NY - CIRCLEVILLE, NY - BEACON FALLS, CT - ANDOVER, MA - GRANBY, MA - GREENWICH, CT - EAST SOUND, WA - GRAHAM, WA - CRAWFORDVILLE, FL - RIDGEFIELD PARK, NJ - DE FUNNIAK SPRINGS, FL - DUDLEY, NC - AIEA, HI - SWEPSONVILLE, NC - MISSOULA, MT - WOLFEBORO, NH - PORTLAND, OR - JAKARTA, IN - COALTON, WV - ELMHURST, IL - WATERTOWN, NY - KEENE, NH - CAPE MAY NJ - NAMPA, ID - ALBANY, OR - FT. THOMPSON, SD - CLIFTON, IL - BARTOW, FL - NAPLES, FL - EAST AURORA, NY - HAYDEN, ID - CHANDLER, IN - OLIVE BRANCH, MS - FREEPORT, PA - WATERTOWN, CT - HASKELL, TX - HOUSTON, TX - ELKTON, MD - RAPID CITY, SD - PHILLIPSBURG, NJ - WANTAGE, NJ - BUREAU, IL - PINEVILLE, LA - SURRY, NH - CALGARY, ALBERTA - STANWOOD, WA - MCCLURE, OH - OSHKOSH, WI - BLAIRSVILLE, PA - GLENVIEW, IL - SAN SALVADOR - NORTH MUSKEGON, MI - ROCKFORD, MI - ANCHORAGE, AK - PHILLIPS, ME - WEST JEFFERSON, OH - CHURUBUSCO, NY - PENN YAN, NY - WASHINGTON MILLS, NY - WHITINSVILLE, MA - GRAND ISLE, VT - FAIRVIEW, NC - THREE BRIDGES, NJ - WALDEN, NY - FISHING CREEK, MD - PALATKA, FL - GREER, AS - MEREDOSIA, IL - HEBRON, KY - POYNOR, TX - CLYDE, TX - SPENCER, IN - DANVERS, MA - TAIPEI



"I just purchased a Skid Unit from C.E.T. Fire Pumps and really got exceptional service. They listened to me and made sure absolutely all my needs were filled. They're real experts in their field—and friendly too."

Robert Pray, Fire Chief, Rehoboth FD, MA

"I've had a C.E.T. Skid Unit for a few years. When the time came to buy another one, i went back to C.E.T. dealer without hesitation. Their Skid Units don't only deliver great performance, they're also real easy to use. I'm sure they paid special attention to that when they designed them. They though about every detail to make things easier for us!"

Leo Gaudette, Fire Chief, Dracut FD, MA



"I have a Skid Unit from C.E.T. and I use it a lot. It's never let me down. That's what I call reliable!"

Bob Shepanski, Fire Chief, Cap May Point FD, NJ

"What I like the most about my Skid Unit is the great performance. When I bought it, the experts at C.E.T. advised me so I'd get maximum power. And now I've got all the power I need! I recommend the C.E.T. team and their drop-in units to all firefighters."

John Paquin, Fire Chief, Eastford FD, CT



... and there are many others. Thank you for your confidence.

SKID UNITS DESIGNED FOR A MINIMUM OF MAINTENANCE COMBINED WITH RELIABLE, COST EFFECTIVE, PERFORMANCE

Low operating costs and minimal down time combined with reduced manpower requirements make CET skid units the best friend of today's department budget. Replacement parts and service are available on the internet and parts will ship in 48 hours, for most needs.

SOLID GUARANTEES

Complete Unit:

C.E.T. Fire Pumps MFG warrants that its products are free from defects in material and workmanship for a period of two years from date of purchase.

Pump Assembly:

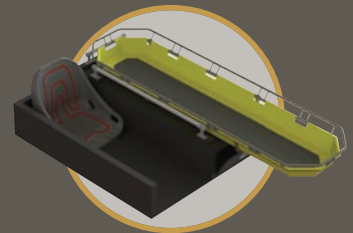
CET will repair or replace all main fire pump components unconditionally for up to two years.

Water tank:

Limited lifetime warranty.



DOWNLOAD OUR CATALOGS
AT WWW.FIRE-PUMP.COM



PORTABLE PUMPS - SKID UNIT - CAFS - FOAM TRAILER - GLIDER KIT - BRUSH TRUCK



Head office

75 Hector Street, P.O. Box 90
Pierreville, Qc, Canada J0G 1J0
Phone: 1-450-568-2719
Fax: 1-450-568-2613
E-mail: sales@fire-pump.com

US sales

Phone: 1-800-567-2719
Fax: 1-800-434-2613

ACCEPT ONLY THE BEST

A CENTURY OF ENGINEERING FOR THE BRAVEST

USA - CANADA - SOUTH AMERICA - EUROPE - ASIA / MIDDLE EAST

www.fire-pump.com



YouTube